

# TABELLA COLORI PER INCHIOSTRI BICOMPONENTI TWO-COMPONENT INKS COLOUR CARD



110



111



112



115



117



120



121



122



124



130



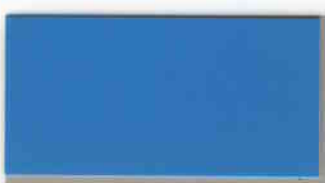
131



132



133



134



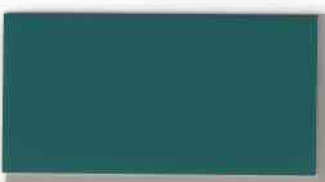
136



140



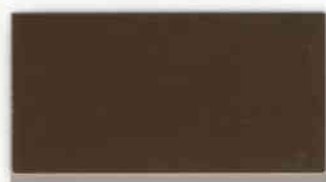
141



142



150



151



160



165

Tinte disponibili nelle seguenti Serie: / Colours available in the following ink Series:  
**HP, KM, TU, XF, XF-GL, XF-DD, XFM, XF-PVC**

Catalizzatori: / Hardeners:

**XFH** (HP, KM, TU, XF, XF-DD, XF-PVC) - **XFH-GL** (XF-GL) - **XFH-N** (XF-DD, XFM)

I seguenti inchiostri possono essere usati anche come monocomponenti: / The following inks can be used even as one-component inks:  
**HP, KM, TU, XF-PVC**